

## Beckhoff TwinCAT 3 ADS/AMS (Ethernet)

Supported Series:

CX8000, CX90x0, CX1010, CP62xx, CX5010, CP62xx, CX1020, CX2020, CPxxxx, C6920, CX2030, CPxxxx, CP6930, CX2040, C65xx, C69xx.

Website: <http://infosys.beckhoff.com/>

### HMI Settings:

Parameters	Recommended	Options	Notes
<b>PLC type</b>	Beckhoff TwinCAT 3 ADS/AMS (Ethernet)		
<b>PLC I/F</b>	Ethernet		
<b>Port no.</b>	48898		
<b>ADS port</b>	851	851,852,853,854	

### Device Address:

Bit/Word	Device	Format	Range	Memo
B	IX	DDDDDDdd	0 ~ 6553515	*Note
B	QX	DDDDDDdd	0 ~ 6553515	*Note
B	MX	DDDDDDdd	0 ~ 6553515	
B	IX_Bit	DDDDDDo	0 ~ 65537	*Note
B	QX_Bit	DDDDDDo	0 ~ 65537	*Note
B	MX_Bit	DDDDDDo	0 ~ 65537	
W	IW	OOOOOO	0 ~ 65535	*Note
W	QW	DDDDDD	0 ~ 65535	*Note
W	MW	DDDDDD	0 ~ 65535	
W	ID	DDDDDD	0 ~ 65535	*Note
W	QD	DDDDDD	0 ~ 65535	*Note
W	MD	DDDDDD	0 ~ 65535	

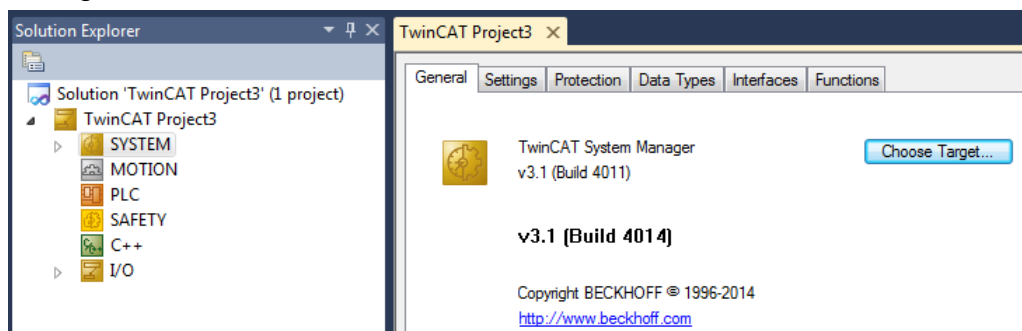
Note: The I addresses and Q addresses are mapped to M addresses. To use I addresses or Q addresses, please use Beckhoff TwinCAT PLC – Free Tag Names (Ethernet) driver instead.

## TwinCAT 3 PLC Settings:

To connect Beckhoff devices, HMI's information must be registered to PLC first. The following steps describe how to register HMI's information into Beckhoff devices.

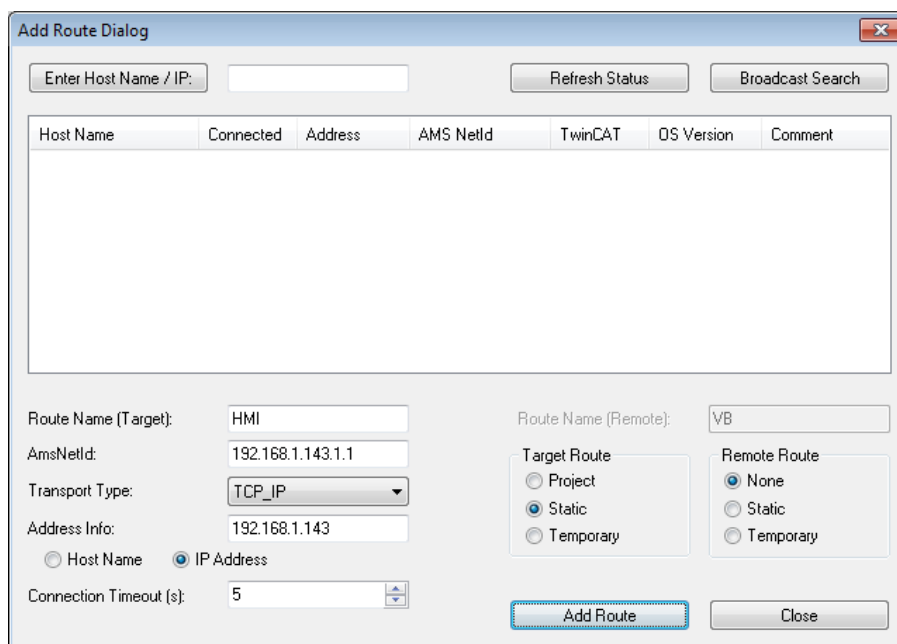
### Step1.

Double click [SYSTEM], and then select [Choose Target System]. Select the device you are connecting.



### Step2.

Expand the SYSTEM layer, select [Routes]. Click [Add] to add HMI information as below.



Name: A user-defined name

AMS Net ID: must be HMI's IP address + ".1.1"

Transport Type: TCP\_IP

Address: HMI's IP address

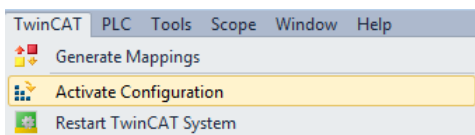
### Step3.

If added successfully, you will see a new item in Remote Computers. Click [Apply] to apply the configuration.

Route	AmsNetId	Address	Type	Comment
192.168.1.141	192.168.1.141.1.1	192.168.1.141	TCP_IP	
HMI	192.168.1.143.1.1	192.168.1.143	TCP_IP	

### Step4.

Select [TwinCAT] menu, and then select [Activate Configuration] to apply the new settings.



## Wiring Diagram:

Ethernet cable:

